



It's an exciting year for Re-engage, as we celebrate our 60th year of reducing loneliness for older people across the UK. What began with a single tea party for a small group of neighbours in London has grown – thanks to volunteers like you – into a charity supporting thousands of older people from Exeter to Edinburgh, Norwich to Newport and many places between. We'll share more about the plans to celebrate our diamond anniversary soon, and are looking forward to getting as many people as possible involved.

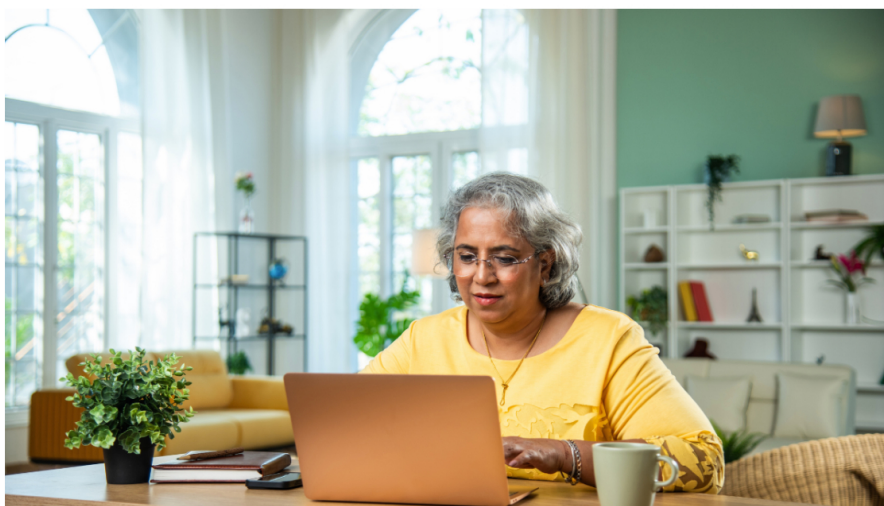
Every year, we ask you to take part in our annual survey, which is a vital tool to help us understand how your volunteering role is going, and how we can improve your experience and the services we deliver. You'll receive a link to the survey, which takes around 10 minutes to complete, next month.

February is LGBTQ+ history month, and we've launched a campaign to encourage more older people to join our Rainbow Call Companion service. If you know anyone who'd be interested in finding a Rainbow Call Companion, please **share our dedicated web page** and social media posts for more information.

As always, if you'd like to get in touch to share your experiences, please email us at **knowledge@reengage.org.uk**

With very best wishes,

Emily Mangroves
head of service delivery and volunteering



Re-engage annual survey 2025

It's that time of year again when we'll be asking volunteers, older people and referrers for their views and experiences of Re-engage. We're keen to hear from as many of you as possible – what you tell us about your experiences during the past year will help us to continue to review and improve what we do, and helps us to measure the difference that Re-engage activities make.

Discover more





Check out our FAQs

If you have a question about your volunteering role, the first thing we recommend is to check our online FAQ hub, where you'll find answers to some common queries. Whether you're a driver, call companion or activity or tea party group volunteer, you'll find useful information here.

[Read the FAQs](#)



Changing needs

When the needs of the older people you support change, it's important to know what steps you can take. Read our handy guide to find out more, and don't hesitate to get in touch with us if you have any questions or concerns.

[Read more](#)



We're film awards finalists!

Our Christmas animation, '*Friendship: The Perfect Present for Peter*', has made it to the finals of the Smiley Charity Film Awards in the £2.5-£5 million category! This is a huge achievement and a testament to the incredible impact of Re-engage - made possible by amazing volunteers like you. Thank you for championing our work and helping us reach this stage!

[Meet the finalists](#)



Rainbow Call Companions

Brian, 86, says conversations with his Re-engage Rainbow Call Companion always leave him with a smile on his face. During February, which is LGBTQ+ History Month, we're focusing on the difference Rainbow Call Companions make, and encouraging more older people to join the service.

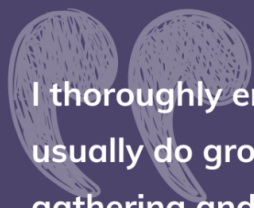
[Learn more](#)



Impressive impact

During the first six weeks of 2025, impact volunteers gave us 7,264 minutes – more than 120 hours! - of their time, making 226 calls to ask older people about their experiences with Re-engage. Impact volunteers play a crucial role in our ability to demonstrate the difference that you make to the lives of lonely and isolated older people and ensure the voices of older people are at the heart of what we do. Fancy joining us as an impact volunteer?

[Become an impact volunteer](#)



I thoroughly enjoy the tea parties. I don't usually do group activities but as this is a small gathering and with the wonderful drivers that pick me up and drop me off, I do enjoy it.

Re-engage guest

Thank you

We ask tea party guests, activity group participants and call companion connections what Re-engage means to them. Each month, we share some feedback so you can see the impact your time, energy, and generosity have on older people's lives all year round.

Your impact

Please check your details so we can stay in touch

Copyright © 2025 Re-engage, All rights reserved.

You are receiving this email because you volunteer for Re-engage.

Our mailing address is:

7 Bell Yard, London WC2A 2JR

[Add us to your address book](#)

[View in browser](#)

