



This year, Re-engage celebrates 60 years of reducing loneliness in later life, and we're excited to be planning the celebrations which will launch properly in April, marking the anniversary of the very first tea party way back in 1965. We're looking forward to celebrating this significant moment in our history alongside our volunteers, fundraisers, older people, supporters and staff.

We're busy pulling together plans for this year's annual survey and annual report, which always give us time to reflect on our strengths and successes and consider where there's space to adapt and improve. Read more about our plans for 2025 and beyond in the first of my brand-new monthly updates.

Best wishes,
Jenny Willott
CEO

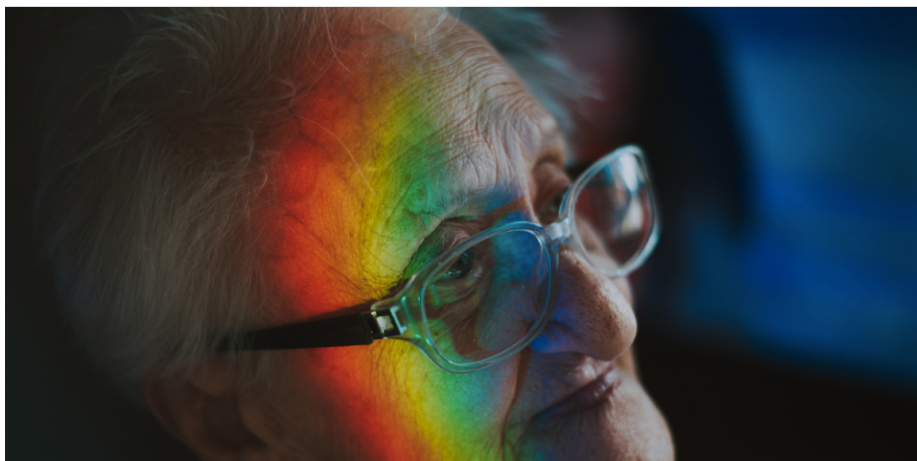
[Read Jenny's update](#)



We are family!

Shivam has volunteered with us for more than 10 years, first as a driver, and now as a tea party host. With support from his family, he regularly opens his home in south west London to older guests, where they enjoy a very warm welcome, delicious food and great company.

[Meet Shivam](#)



Rainbow Call Companions offer connections for LGBT+ people

February is LGBT+ History Month, and we're shining a light on the loneliness faced by many older LGBT+ people, and how our Rainbow Call Companion service – supported by TV's Dr. Ranj Singh and actor Miriam Margolyes – is making a difference.

[Read more](#)

What an end to 2024!

November and December are always busy months for the Re-engage team, with fundraising activities, recruitment campaigns and volunteer-led events to mark the festive season. Here's a round-up of just some of the highlights.

[Discover more](#)

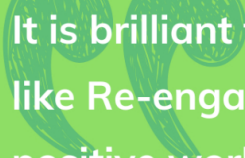
It made sense to switch to payroll giving, as there is a tax benefit for me, and most importantly, my company matches funds, so that meant Re-engage getting a double bubble!

- Louise, payroll giver

Tackle loneliness through your pay slip

As February marks Payroll Giving Month, we're highlighting the benefits of giving a regular donation through your pay slip. As well as making a huge difference for older people experiencing loneliness, payroll giving offers tax benefits to you. Additionally, many companies match payroll gifts, meaning your donation could have twice the impact!

[Find out more](#)



It is brilliant that we have organisations
like Re-engage doing some really
positive work in our communities, as
many of our residents need this support.

- Referrer

Thank you

Whether you're a volunteer, fundraiser, donor, referrer, or you spread the word about our work, you're helping us deliver services that reduce loneliness in later life. Thank you for your support.

[Our impact](#)

Copyright © 2025 Re-engage, All rights reserved.

You are receiving this email because you subscribed to receiving Re-engage emails.

Our mailing address is:

7 Bell Yard, London WC2A 2JR

[Add us to your address book](#)

[Unsubscribe](#)

[View in browser](#)

